

Outdoor Smart Outlet Model: SOP04-US

Functions and Features:

Outdoor Smart Outlet controlled by phone application or voice.

Outdoor Smart outlet working with Amazon Echo, Google Home IFTT.

Customize your own personal schedule to suit your needs.

Share devices with your family and they also can control home appliance.

Package content

1 x Outdoor Smart Outlet

1 x User Manual

Outdoor Smart Outlet

Model Number: SOP04-US

Waterproof Level: IP44

Parameters: AC 100-240V 50/60Hz

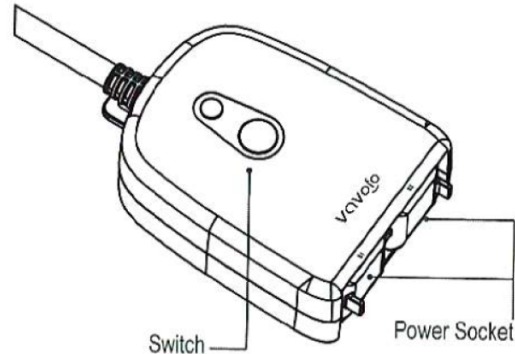
Max Power: 1875W (resistance loading)

Max Current: 15A

Rated Voltage: 125V

Working Temperature: -20 - 60°C (-4 - 140°F)

Remote Control: Smart Life APP (compatible with Android 4.1/IOS 8.0 or above)



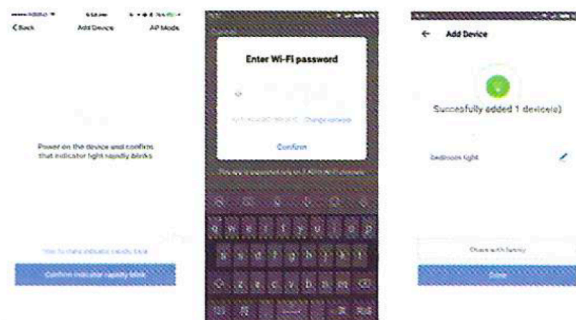
1. Download "Smart Life" app from scanning the code.
Search Application named "Smart Life" at App store or Google Play



2. Register a Smart life account and sign in the app. Tab 'Add Devices', then 'Electronic Outlets.'
Note: Our APP only supports 2.4 GHz Wi-Fi network.



3. Power on the device and press button for 5 seconds, confirm that indicator light rapidly blinks.
 4. After confirmed, enter Wi-Fi password. Connected and change your device's name.
 5. Change device name to a easily recognized word or phrase, like "bedroom light". DONE and succeed.
- When you plug the product into electrical outlet, blue indication light will turn on. Long press the button on product, product will be in pairing status, green indicator light will flash quickly. When product link is successful, the green indicator light will always on. If there are no power on electrical outlet, the blue indicator light will turn off.



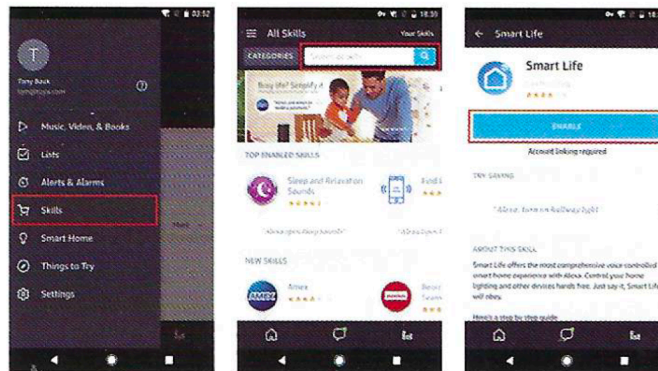
Quick Guide of using Amazon Echo to Control Smart Devices

1. What you need to get started

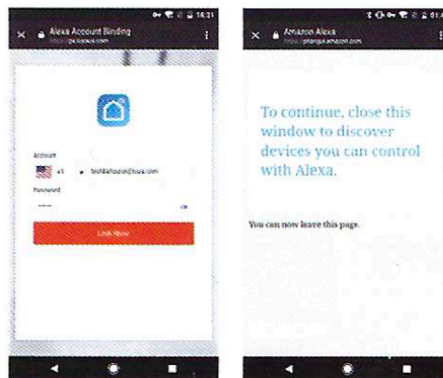
- Stable Wi-Fi network which could access to Amazon server.
- An Echo device, including Eco, Echo Tap or Echo Dot.
- An Amazon account.
- Smart Life app and a related account. Please refer to the user manual).

2. Link Smart Life account to Alexa

2.1 Tap “Skills” in the menu, then search “Smart Life”. Select “Smart Life” and tap “ENABLE” to enable the Skill.



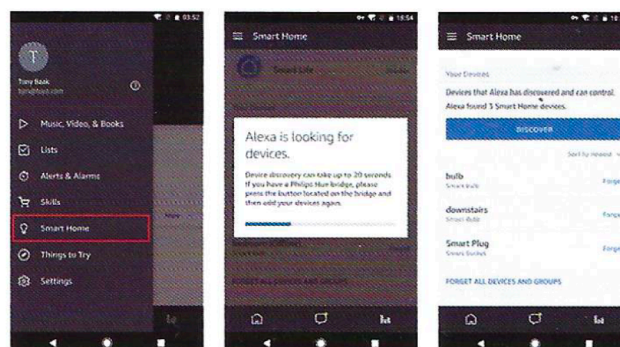
2.2 You will be redirected to the account link page. Type in your Smart Life account and password, don't forget to select the country/region where your account belongs to. Then tap “Link Now” to link your Smart Life account. The country/region, account, and password must be the same with your registry.



3. Control your smart devices through Echo

3.1 Discover devices

Echo needs to discover your smart devices before it controls them. You can't say "Alexa, discover devices" to Echo. Echo will discover devices which have already been added in the Smart Life app. You can also tap "DISCOVER" to discover the smart devices. Discover devices will be shown in the list.



3.2 Control devices by voice commands

Now you can control your smart devices through Echo. You can use the following commands to control your devices (e.g., bedroom light):

Support Skill List

User can control devices by instructions like below:

- Alexa, turn on bedroom light
- Alexa, turn off bedroom light

Note: every time you change the device's name on Smart Life app, Echo must re-discover before you control them.

Note: The name of the device must be consistent with the addition of Smart Life app.

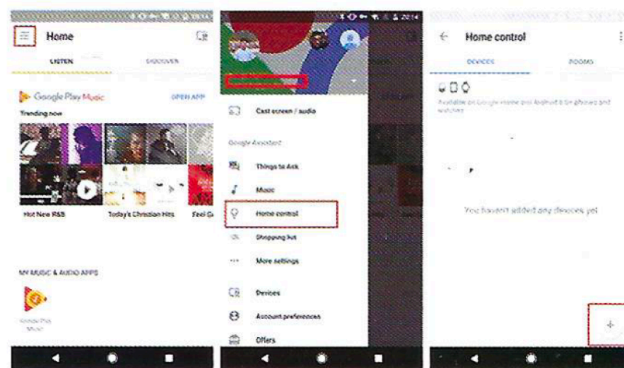
Quick Guide of Using Google Home to Control Smart Devices

1. What you need to get started

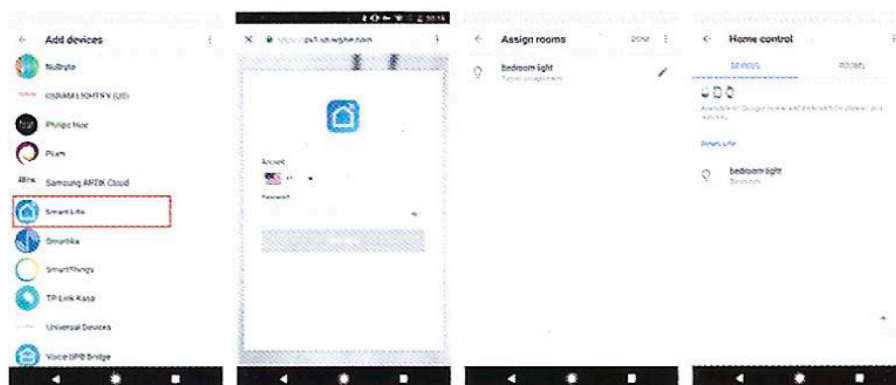
- A Google Home Device, or Android phone with Google Assistant.
- Latest Google Home app.
- Latest Google app (Android only)
- A Google account.
- The device display language must be set to English US.
- Smart Life app and a related account.
- Smart devices.

2. Link Smart Life account in Google Home Control

2.1 Tap "Home Control" in the menu on the Google Home app's home page, then tap "+"



2.2 Find "Smart Life" in the list. In the new window, select your Smart Life account's region, type your Smart Life account and password, then tap "Link Now". After you assign rooms for devices, your devices will be listed in the Home Control page.



3. Control your smart devices through Google Home

Now you can control your smart devices through Google Home. Take bedroom light as the example, the supported voice commands are as below:

- OK Google, turn on bedroom light
- OK Google, turn off bedroom light.

Quick Guide of Using IFTTT to Control Smart Devices

1. What you need to get started

- Stable Wi-Fi network which could access to IFTTT server. A device, which could use IFTTT service, including computer or mobile device.
- An IFTTT account, could be replaced by Facebook account or Google account.
- Smart Life app and a related account.
- Smart devices, could be controlled by IFTTT service.

2. Set up IFTTT and enable Smart Life Skill

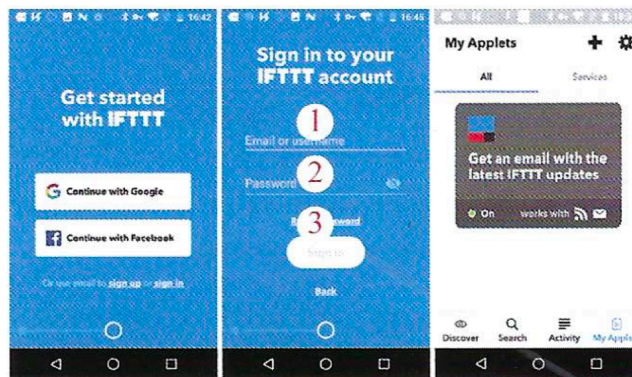
User can configure IFTTT through web or app. We take app configuration as an example in this guide.

Web: <https://ifttt.com/discover> (Configuration through web is basically the same as app)

App: Search "IFTTT" in App Store or Google Play to install the app.

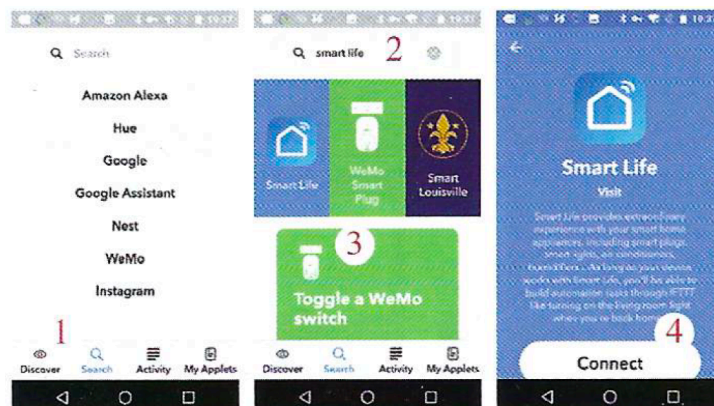
2.1 Sign in IFTTT app

1. Open the IFTTT app by tapping the app icon on your mobile device.
2. Type in your IFTTT account and password, then tap "Sign In". IFTTT account could be replaced by Facebook's account or Google's account.
3. When you sign in IFTTT app successfully, the display in the app is shown as below.

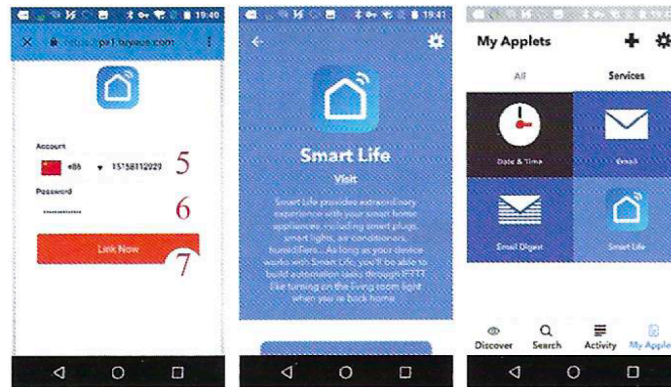


2.2 Link Smart Life account to IFTTT

1. Tap "Search" below the screen, then enter "Smart Life" in the search box, select the "Smart Life" option, and tap "Connect" to enable Smart Life.



- You will be redirected to the account link page. Type in your Smart Life account and password, don't forget to select the country/region where your account belongs to. Tap "Link Now" to link your Smart Life account. You can check it in the "Services" of "My Applet".



3. Create Applet to control your smart devices (Example 2)

IFTTT is the abbreviation of "If this then that". "Applet" represents a complete task composed of conditions & tasks. "this" represents the condition, while "that" represents the task.

Example 2: create an Applet (If I come to the area, my bedroom light will be turned on automatically)

3.1 Create "this" to configure the trigger

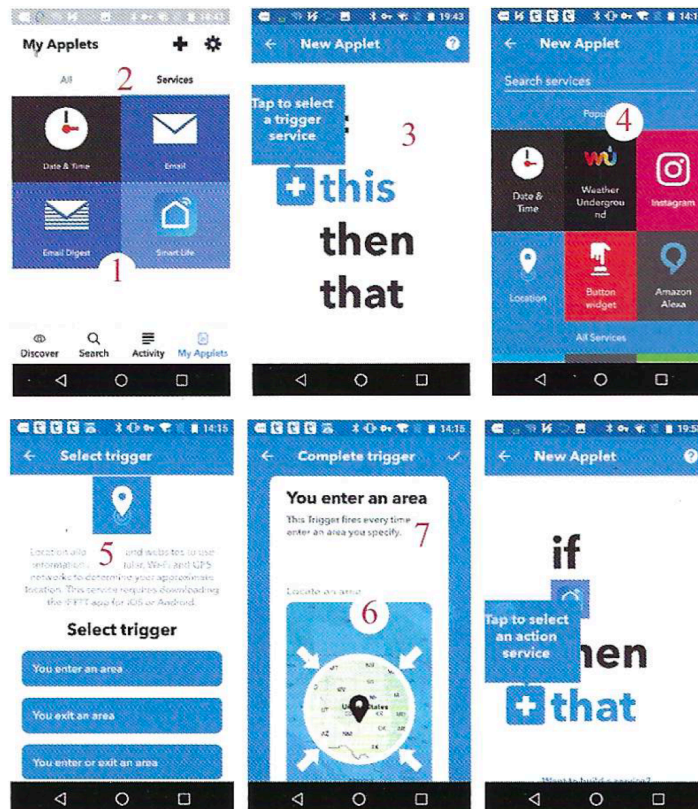
Step 1, tap "My Applets" tab in the IFTTT app, and then tap the "+" symbol on the top right of the screen to establish a new Applet.

Step 2, tap "this" to add a condition for Applet, and then tap "Location" on the service search page.

Step 3, select detail trigger in "Location", such as "You enter an area"

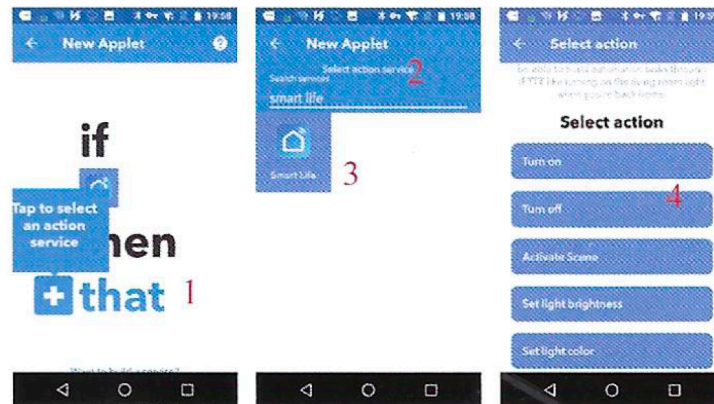
Step 4, select a specific area by dragging the map or directly entering the location name.

Step 5, tap the "✓" on the top right of screen to save this condition.

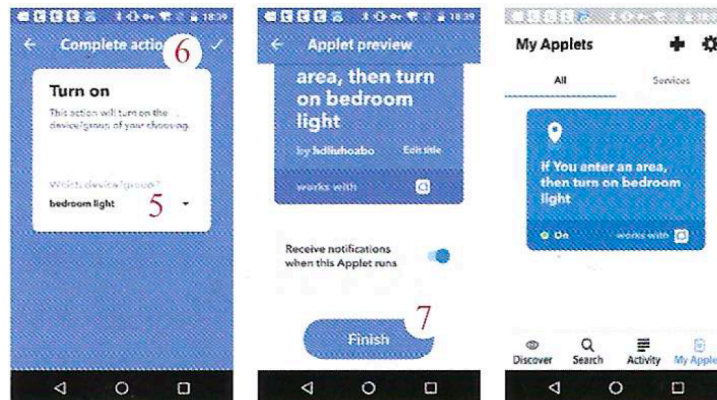


3.2 Create “that” to configure the task

1. Tap “that” to add a task, and then enter “Smart Life” in the search box, select the “Smart Life” option.
2. Select detail action in Smart Life, such as “Turn on”.



3. Choose the corresponding equipment, and then tap the “✓” on the top right of screen to save this task.
4. Tap “Finish” to complete the creation of this Applet, and it will be saved automatically. You can check it in the “All” of “My Applet”. When we turn on the bedroom light (trigger condition), the color of the light will be set to green automatically (to perform the task).



SmartLife App